

NEOX size charts

NEOX

FRAME COMPONENTS - WIDTH-DEPENDENT

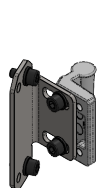
FOLDING FRAME SIZE	1	2
Sliding arm (Please note! Maximum tightening torque 3Nm at rear module)	87595	87596
Detachable tension rod	87609	
Foldable tension rod	87612	87611
FRAME SIZE	W34,5 TO W47	W49 TO W57
Handlebar including headrest adapter	87613	87614

SEAT SUPPORT - WIDTH-DEPENDENT FLX SUPPORT

	FOLDING FRAME SIZE 1		FOLDING FRAME SIZE 2	
Newton FLX 1 backrest	BH 35: 87616	BH 45: 87618	BH 35: 87617	BH 45: 87619
Newton FLX 2 backrest	BH 35: 87620	BH 45: 87622	BH 35: 87621	BH 45: 87623
Newton FLX Stabilizer Plate	From W37: 87654			

SEAT SUPPORT - WIDTH-DEPENDENT CURVE SUPPORT

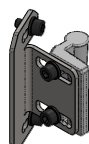
	W37	Mounting Position	W42	Mounting Position	W47	Mounting Position	W52	Mounting Position	W57	Mounting Position
SW37	87843	D								
SW39,5	87843	C								
SW42	87844	D	87844	D						
SW44,5	87844	B	87844	B						
SW47			87842	B	87842	B				
SW49,5			87842	A	87842	A				
SW52					87845	B	87843	B		
SW54,5					87845	A	87844	C		
SW57							87844	A	87844	A



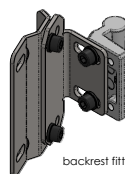
backrest fitting 1



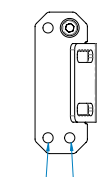
backrest fitting 2



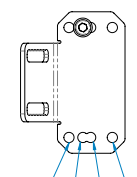
backrest fitting 3



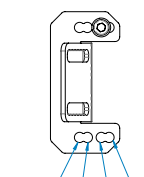
backrest fitting 4



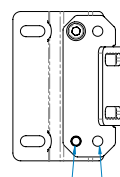
87842 / type 1



87843 / type 2



87844 / type 3



87845 / type 4



NEOX size charts

SEAT SUPPORT - WIDTH AND DEPTH-DEPENDENT NEWTON FLX SEAT CUSHION

	D40	D42	D44	D46	D48	D50	D52	D56
W34,5	87846	87847	87847	87848	87848	87849	87849	87850
W37	87851	87852	87852	87853	87853	87854	87854	87855
W39,5	87851	87852	87852	87853	87853	87854	87854	87855
W42	87856	87857	87857	87858	87858	87859	87859	87860
W44,5	87856	87857	87857	87858	87858	87859	87859	87860
W47	87861	87862	87862	87863	87863	87864	87864	87865
W49,5	87861	87862	87862	87863	87863	87864	87864	87865
W52	87866	87867	87867	87868	87868	87869	87869	87870
W54,5	87866	87867	87867	87868	87868	87869	87869	87870
W57	87871	87872	87872	87873	87873	87874	87874	87875

LEG SUPPORT - STANDARD FOOTPLATES

Frame width Neox	Footplate width				Calf plate (in combination with Comfort leg rest)		
	Article name	Foot plate left and right equal	Footrest with heel strap right	Footrest with heel strap left	Article name	Standard	Short
W34,5		On request	On request	On request		On request	On request
W37	Footplate W32	87671	87933	87799		On request	On request
W39,5	Footplate W32	87671	87933	87799		On request	On request
W42	Footplate W37	80919	87934	87800	Calf plate W32	84156	84155
W44,5	Footplate W37	80919	87934	87800	Calf plate W32	84156	84155
W47	Footplate W42	80587	87935	87801	Calf plate W37	81020	80928
W49,5	Footplate W42	80587	87935	87801	Calf plate W37	81020	80928
W52	Footplate W47	51166	87936	87802	Calf plate W42	79808	80600
W54,5	Footplate W47	51166	87936	87802	Calf plate W42	79808	80600
W57	Footplate W52	80589	87937	87803	Calf plate W47	79809	80601

LEG SUPPORT - CONTINUOUS FOOTREST

Frame width Neox	Continuous footrest
W34,5	On request
W37	On request
W39,5	On request
W42	87939
W44,5	87947
W47	87940
W49,5	87948
W52	87941
W54,5	87949
W57	87942

LEG SUPPORT - LOWER LEG LENGTH

	Article name	Suspension pipe	Article name	Insert pipe
Foot support				
Lower leg length (LL) short (LL 38 – 48 cm)	Suspension pipe short	87659	Insert pipe short	87669
Lower leg length (LL) standard (LL 41 – 51 cm)	Suspension pipe short	87659	Insert pipe long	88153
Lower leg length (LL) long (LL 44 – 57 cm)	Suspension pipe long	87660	Insert pipe long	88153
Elevating leg support				
Lower leg length (LL) short (LL 38 – 51 cm)	Suspension pipe short left	87808	Insert pipe long	88153
	Suspension pipe short right	87661		
Lower leg length (LL) long (LL 48 – 57 cm)	Suspension pipe long left	87809	Insert pipe long	88153
	Suspension pipe long right	87662		